



North East London

**Barking &
Dagenham**



Barking, Havering and Redbridge
University Hospitals
NHS Trust



Together First CIC
Barking & Dagenham Federation



NHS Foundation Trust



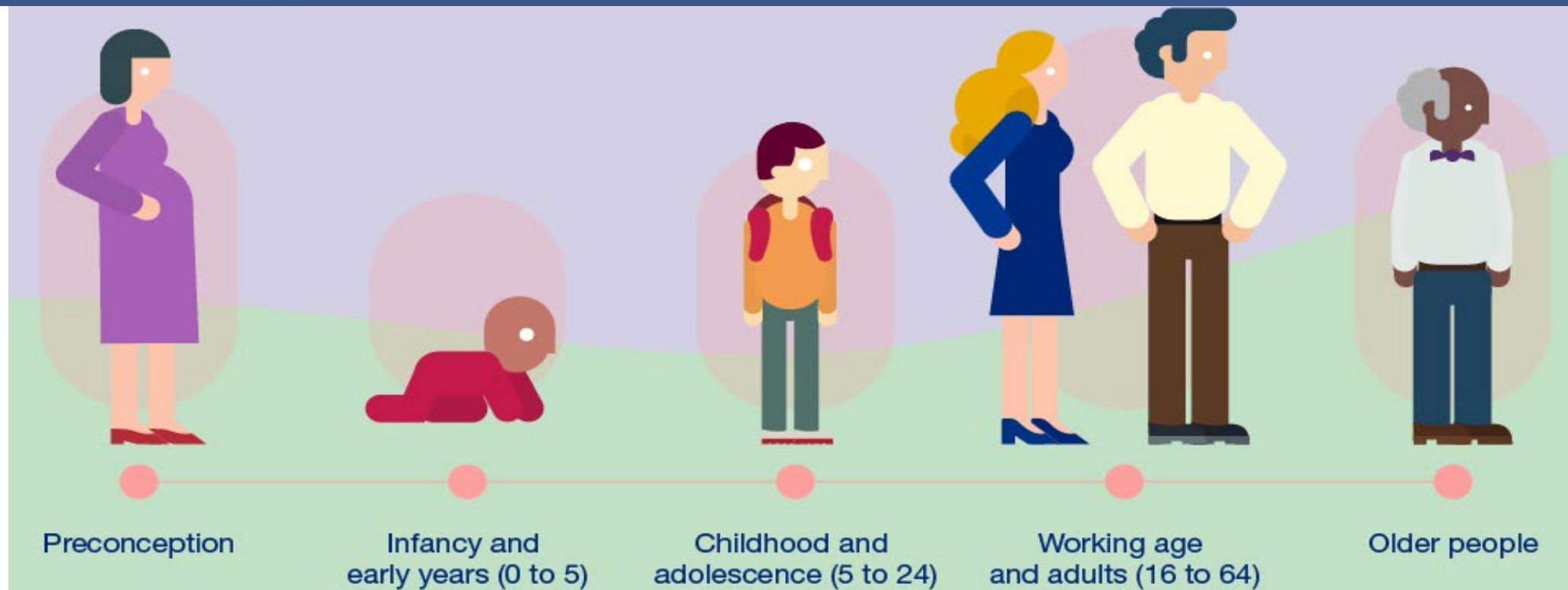
Barking & Dagenham

Borough Partnership

B&D Health Inequalities Programme 22/23

Health Scrutiny Committee, 24 May 2023

B&D Inequalities Across the Life Course



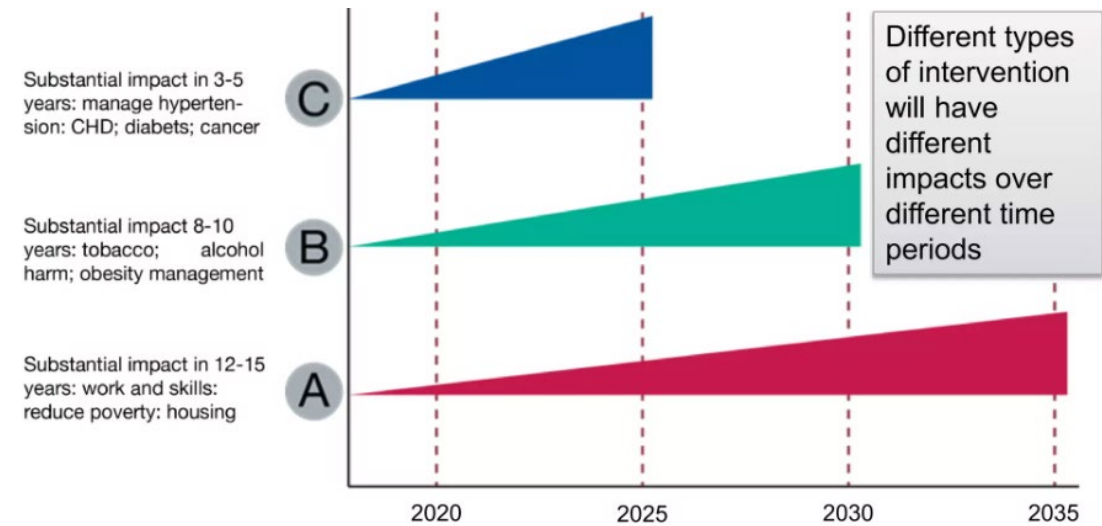
	Obesity in Pregnancy % (2018/19)	Low Birth Weight at Term (2021)	Good Development at 2-2.5 yrs (2021)	Children Living in Absolute or Relative Poverty (2022)	Unhealthy Weight at 10/11 yrs (2021/22)	Economic Inactivity 16-64yrs (2021/22)	Domestic Abuse Incidents per 1,000 population (2021/22)	Healthy Life Expectancy M/F (2018/20)	Life Expectancy at Birth M/F (2021)
B&D	27.4%	3.8%	56.0%	49.0%	49.1%	30.2%	35.4	58.1/60.1 yrs	75.6/80.3 yrs
London	17.8%	3.3%	79.9%	29.5%	40.5%	20.5%	35.4	63.8/65.0 yrs	78.8/83.4 yrs
England	22.1%	2.8%	81.1%	37.0%	37.8%	21.2%	30.8	63.1/63.9 yrs	78.8/82.8 yrs

What Works To Reduce Health Inequalities

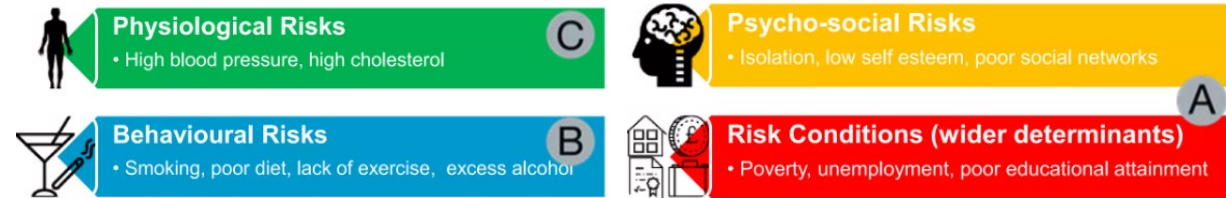
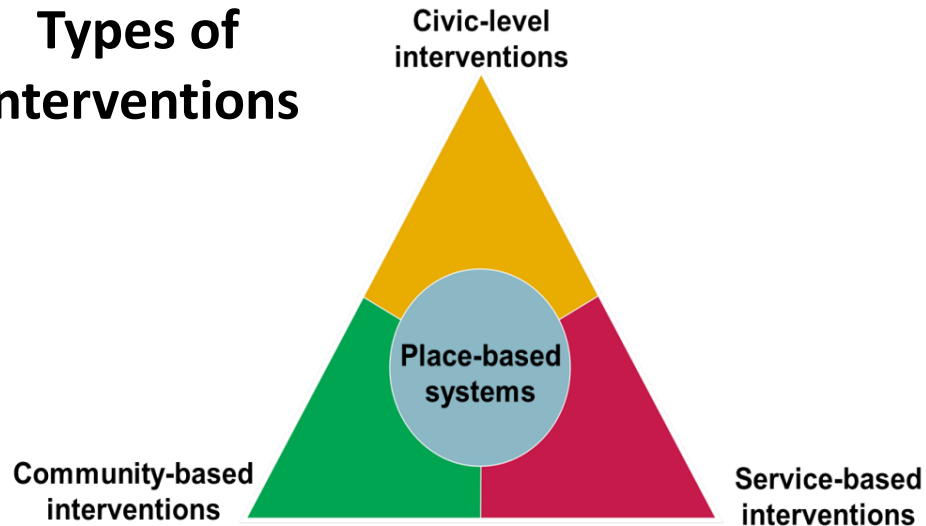
Principles of effective interventions

1. Evidence based
2. Outcomes orientated
3. Systematically applied
4. Scaled-up appropriately
5. Appropriately resourced
6. Sustainable

Timescales of interventions



Types of interventions



Health Inequalities Funding 2022/23

Following NHS England (NHSE) funding to the Integrated Care System (ICS), the North East London Health and Care Partnership (NEL HCP) called for local place-based bids for FY22/23 funding to address:

- *Leadership, strengthen partnership working* – £0.5m allocation per borough
- *Local health inequalities challenges* – up to £0.6m

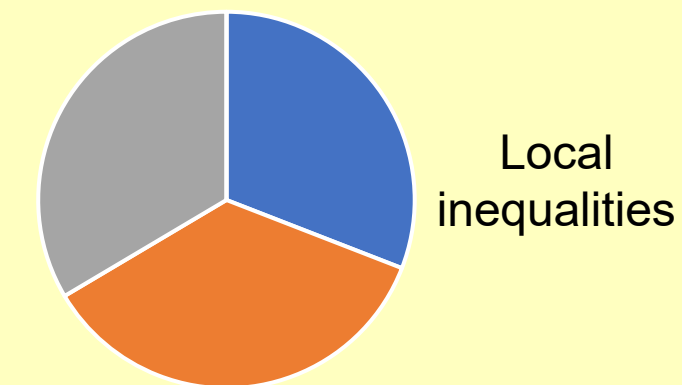
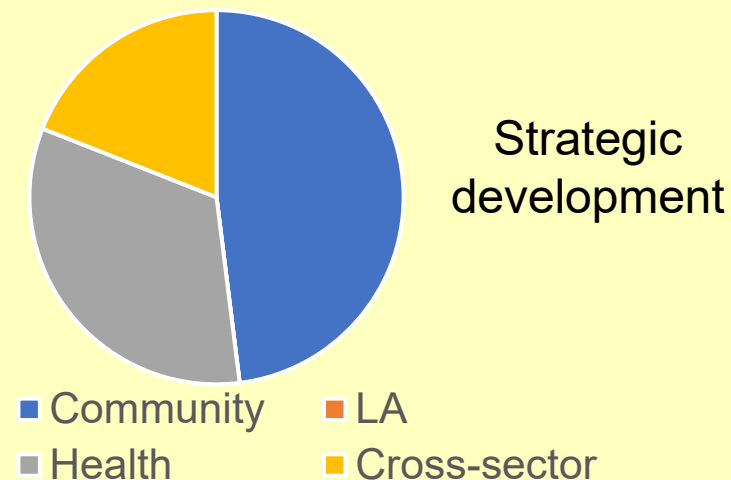
Rapid co-production process across the full Barking and Dagenham partnership

Barking & Dagenham partnership approach recognised as a strength by the NEL Panel (and demonstrated since)

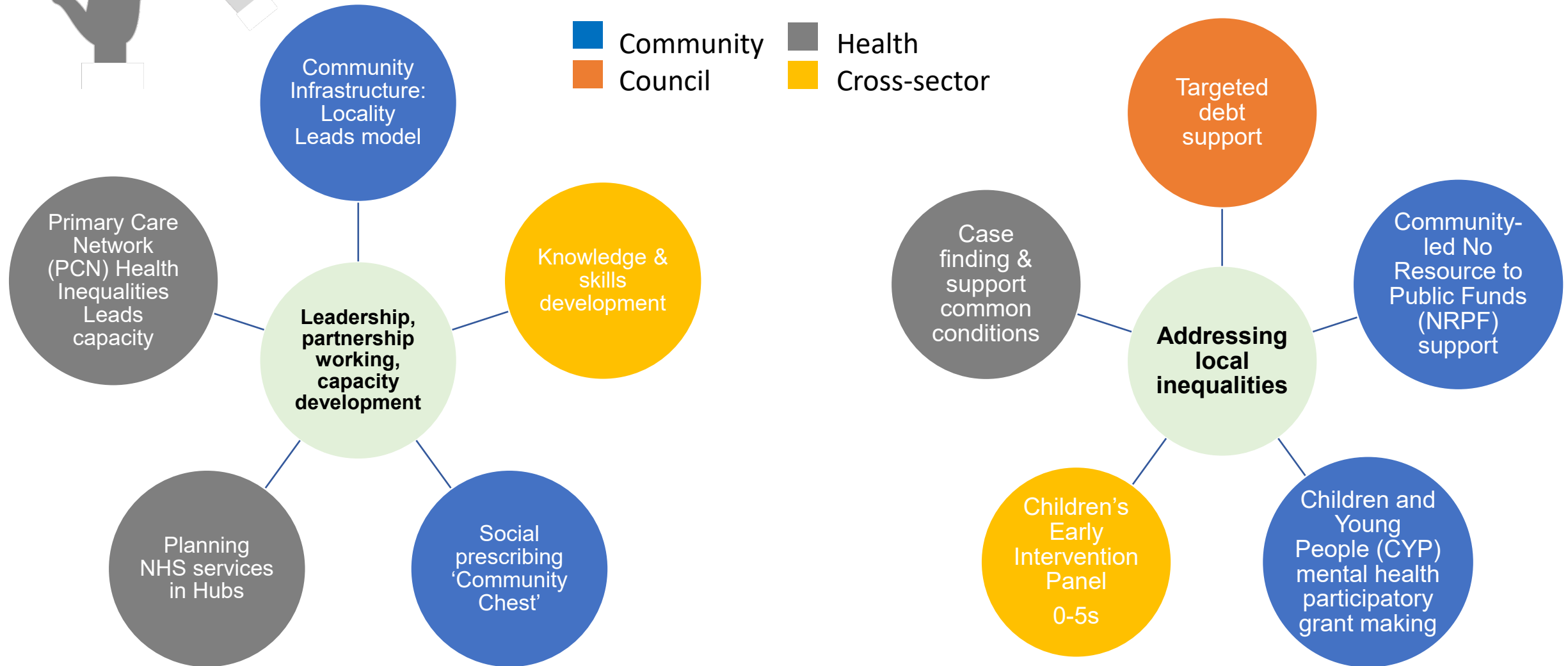
Secured the highest allocation in NEL of £1.1m (20-140% more than other boroughs for competitive element)

Funding / delivery

(% funding per sector)









B&D Health Inequalities Programme Workstreams

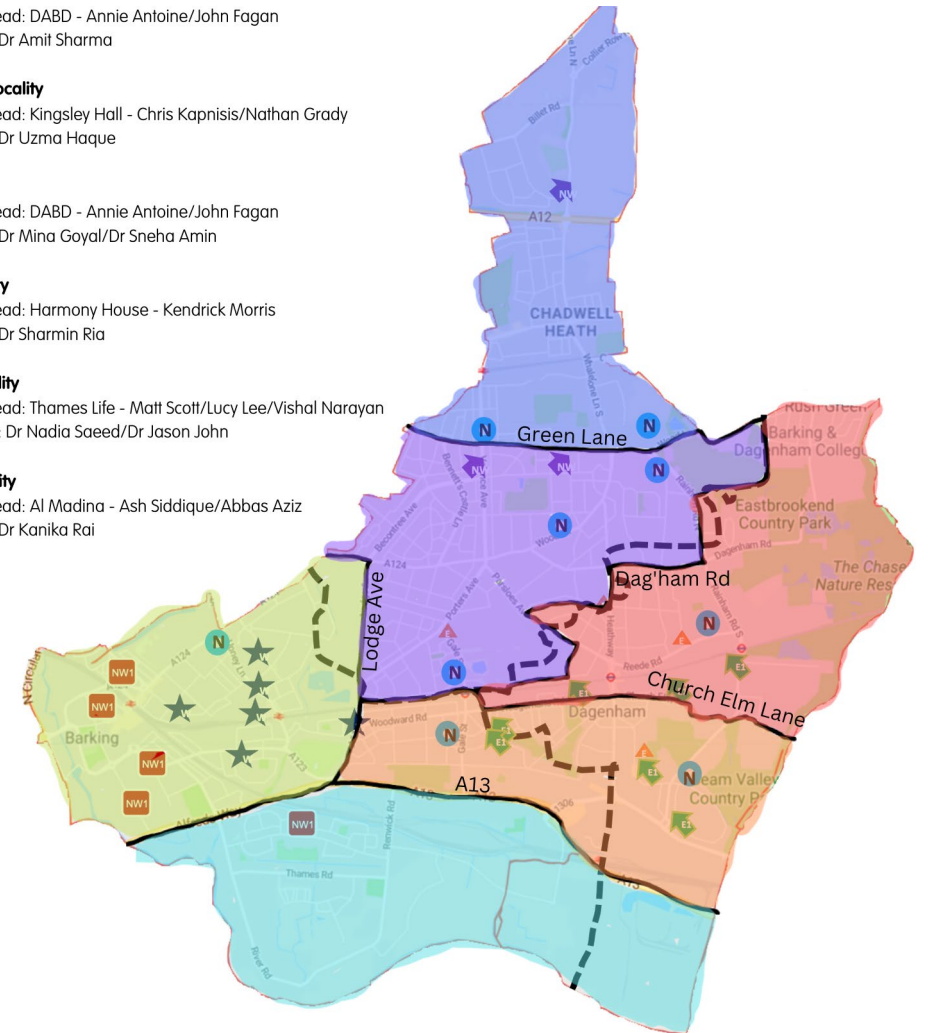


Partnership Working

Community Locality Leads and PCN Health Inequality Leads

- Swiftly established a foundation to which community sector and health partners work together
- PCN Health Inequality Leads and Locality Leads co-designing with residents
- Resident-driven
- Learning fundamental to this way of working (that did not exist before)

-  Community Locality Lead: DABD - Annie Antoine/John Fagan
Health Inequality GP: Dr Amit Sharma
-  **PCN North Central Locality**
Community Locality Lead: Kingsley Hall - Chris Kapnisis/Nathan Grady
Health Inequality GP: Dr Uzma Haque
-  **PCN East Locality**
Community Locality Lead: DABD - Annie Antoine/John Fagan
Health Inequality GP: Dr Mina Goyal/Dr Sneha Amin
-  **PCN East One Locality**
Community Locality Lead: Harmony House - Kendrick Morris
Health Inequality GP: Dr Sharmin Ria
-  **PCN New West Locality**
Community Locality Lead: Thames Life - Matt Scott/Lucy Lee/Vishal Narayan
Health Inequality GPs: Dr Nadia Saeed/Dr Jason John
-  **PCN West One Locality**
Community Locality Lead: Al Madina - Ash Siddique/Abbas Aziz
Health Inequality GP: Dr Kanika Rai



Achievements

Improved place working & action on health inequalities

- Community Locality Leads
- PCN Health Inequalities
- Place-based CYP Early intervention Panel
- Workforce knowledge, skills & practice (e.g. Trauma-informed practice, support for residents with No Recourse to Public Funds)
- Framework for NHS services within community / family hubs

Services-led health improvement & inequalities reduction

- Targeted case finding of undiagnosed / unmanaged health conditions
- Targeted, proactive and holistic support on debt for residents with low level mental health issues
- Faster, holistic support for families through CYP Early Intervention Panel

Community-led health improvement and reduction

- Participatory grant making for children and young people's mental health
- Community Locality Lead-led co-production & prototyping
- Community chest for social prescribing



Next Steps

Health Inequalities Workshop

- Session held with Place-Based Partnership (PBP) Board and wider on 27 April to share and develop consensus on the ICB-funded health inequalities programme and wider place-based approach

Plan for Health Inequalities Programme 2023/24

- Plan coproduced through Place Partnership Workshop and Place Working Group
- To ICB for review on 14 June

Evaluation of 2022/23

- Projects of 2022/23 Health Inequalities Programme evaluated by August 2023
- Learning to help inform next round of programme, live from September 2023